



# **Green Infrastructure**

**Cara Courage**  
**12<sup>th</sup> September 2008**

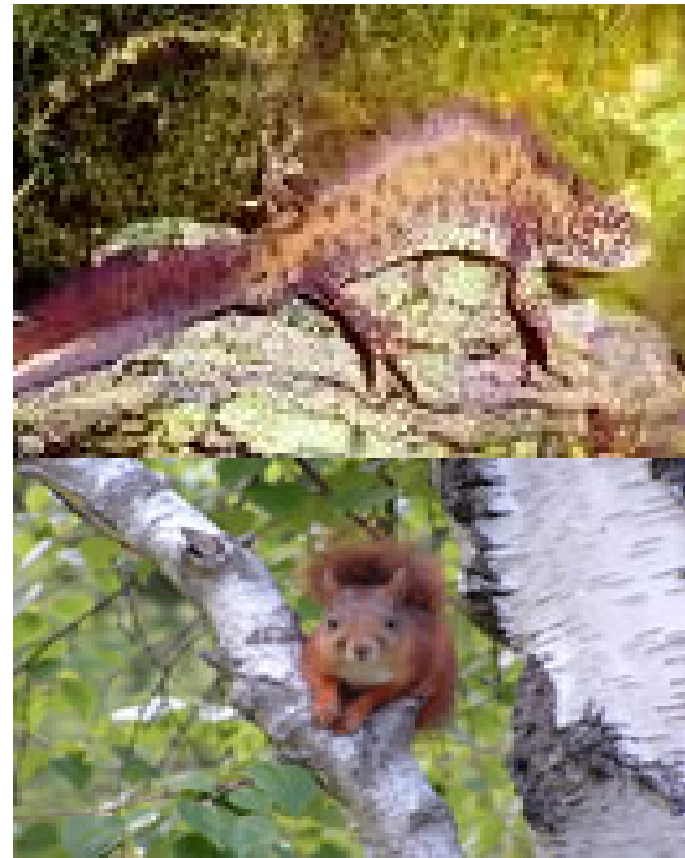
## Green Infrastructure Strategies are a part of the New Growth Point Process



- Each Growth Point is required to develop a Green Infrastructure strategy to protect and enhance key existing environmental features.
- Programmes of Development prepared by the NGP partnerships have to be sent to Government Office by 27<sup>th</sup> October 2008.
- They provide a framework for delivery over the next 8-9 years and must include Green Infrastructure and how it is to be achieved.
- Funding decisions for the Programmes of Development should be made in December.

# How can Natural England help?

- Protected species and designated sites e.g. SSSIs, BAP habitats and species
- Help New Growth Points meet their environmental conditions for the Growth Points
- Help to develop the Green Infrastructure Strategies in partnership



# What is Green Infrastructure?

- A strategically planned network, comprising the broadest range of high quality green spaces and other environmental features.
- Designed and managed as a multi-functional resource capable of delivering those ecosystem services and quality of life benefits required by the local communities.



# What is Green Infrastructure?



- Green Infrastructure includes **established green spaces** and **new sites**.
- It needs to be delivered at all spatial scales.
- Parks, Gardens and Local Nature Reserves
- Functional Greenspace** - informal recreation spaces, play parks, sustainable urban drainage systems e.g. ditches, ponds, soft landscaping and green roofs
- Connecting habitats** - woodland, scrub, grassland, wetlands, open and running water.



# What is Green Infrastructure?

- **Green corridors**— rivers and canals including their banks, road and rail corridors, cycling routes, pedestrian paths, and other public rights of way.
- Allotments, community gardens, city farms, cemeteries and churchyards even private gardens.
- Linking to the **wider countryside** such as urban fringe farmland.



# Natural England can help by working in partnership to produce Green Infrastructure Strategies



**Our Contacts are (0191 229 5500):**

**Regional Policy – Richard Hall** ([richard.hall@naturalengland.org.uk](mailto:richard.hall@naturalengland.org.uk))

**Regional GI overview – Cara Courage** ([cara.courage@naturalengland.org.uk](mailto:cara.courage@naturalengland.org.uk))

**Tees Valley – Carl Watts** ([carl.watts@naturalengland.org.uk](mailto:carl.watts@naturalengland.org.uk))

**South East Durham – Ingo Schuder** ([ingo.schuder@naturalengland.org.uk](mailto:ingo.schuder@naturalengland.org.uk))

**Newcastle & Gateshead – Fran Falconer** ([frances.falconer@naturalengland.org.uk](mailto:frances.falconer@naturalengland.org.uk))

**South East Northumberland – Nick Dales** ([nick.dales@naturalengland.org.uk](mailto:nick.dales@naturalengland.org.uk))

**North Tyneside – Nick Dales** ([nick.dales@naturalengland.org.uk](mailto:nick.dales@naturalengland.org.uk))

