



# REGIONAL PERSPECTIVE

Claire Megginson

Planning Manager

Association of North East Councils

9 March 2010



## Presentation Structure – A potted history of regional activity on renewable energy

- North East renewable energy strategy
- Regional Spatial Strategy
- Landscape studies
- Capacity and constraints study
- Integrated North East Strategy

# North East Renewable Energy Group 2002



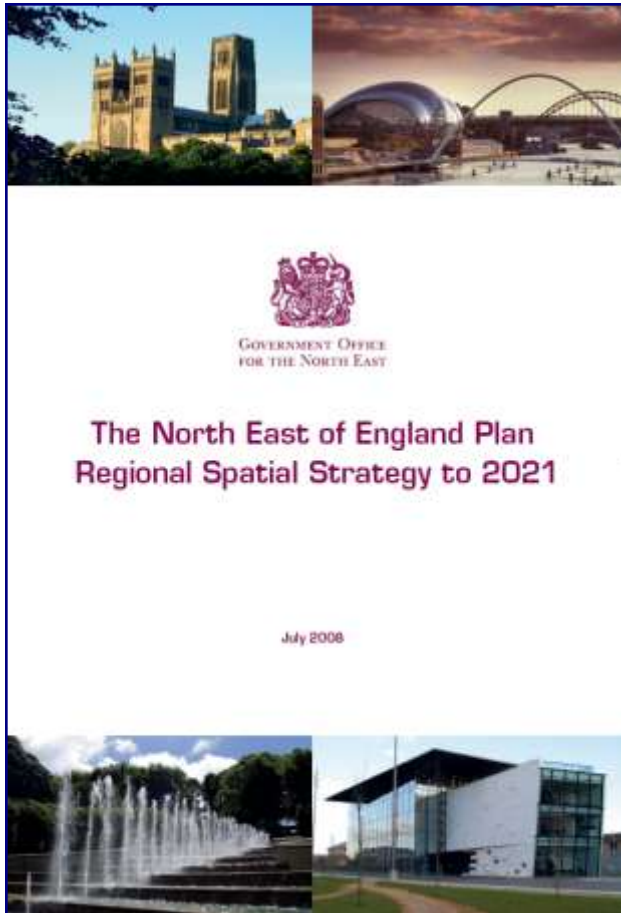
## North East Renewable Energy Strategy 2005

Main conclusions:

- NE should strive to achieve 10% by 2010 and 20% by 2020
- Onshore wind is regions most significant resource
- Region should pioneer heat only renewable energy – biomass
- Kielder strategic renewables resource



# Regional Spatial Strategy



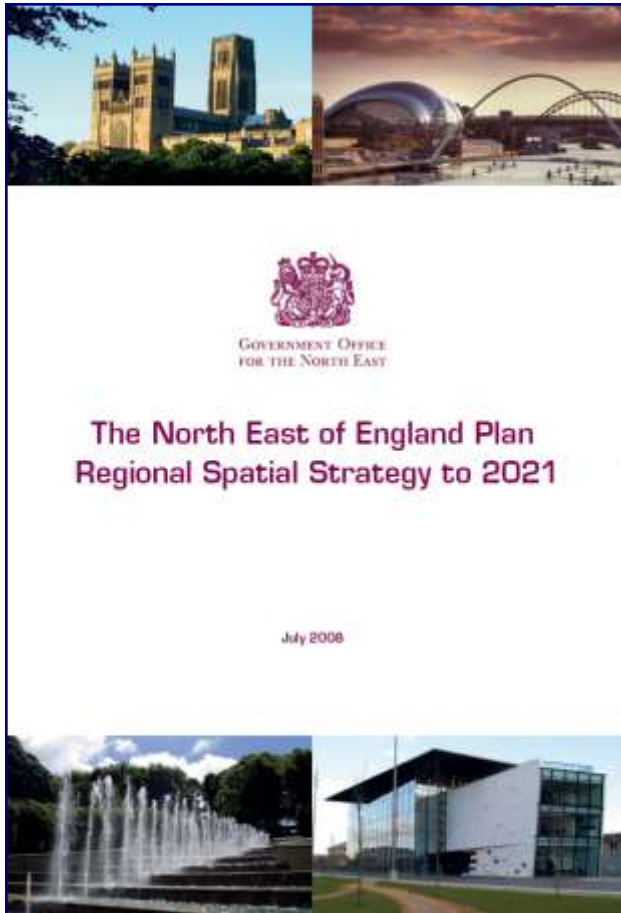
Adopted July 2008

Policy 39 Renewable energy generation:

- Facilitate at least 10% by 2010
- Aspire to achieve 20% by 2020
- Sub regional targets



# Regional Spatial Strategy



## Policy 40 Planning for Renewables:

- Plans to identify renewable resource areas
- Criteria set out when assessing proposals



# Landscape Capacity Studies

- ARUP commission
- Provide evidence for policy and decision making
- Material consideration – tool not part of the statutory development plan
- Award winning methodology

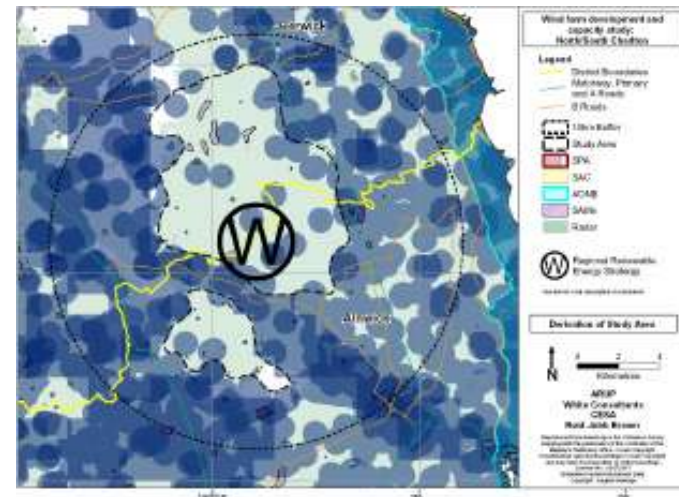


Figure 2 – Study Area on O8 base



# Renewable Energy Capacity and Constraints Study

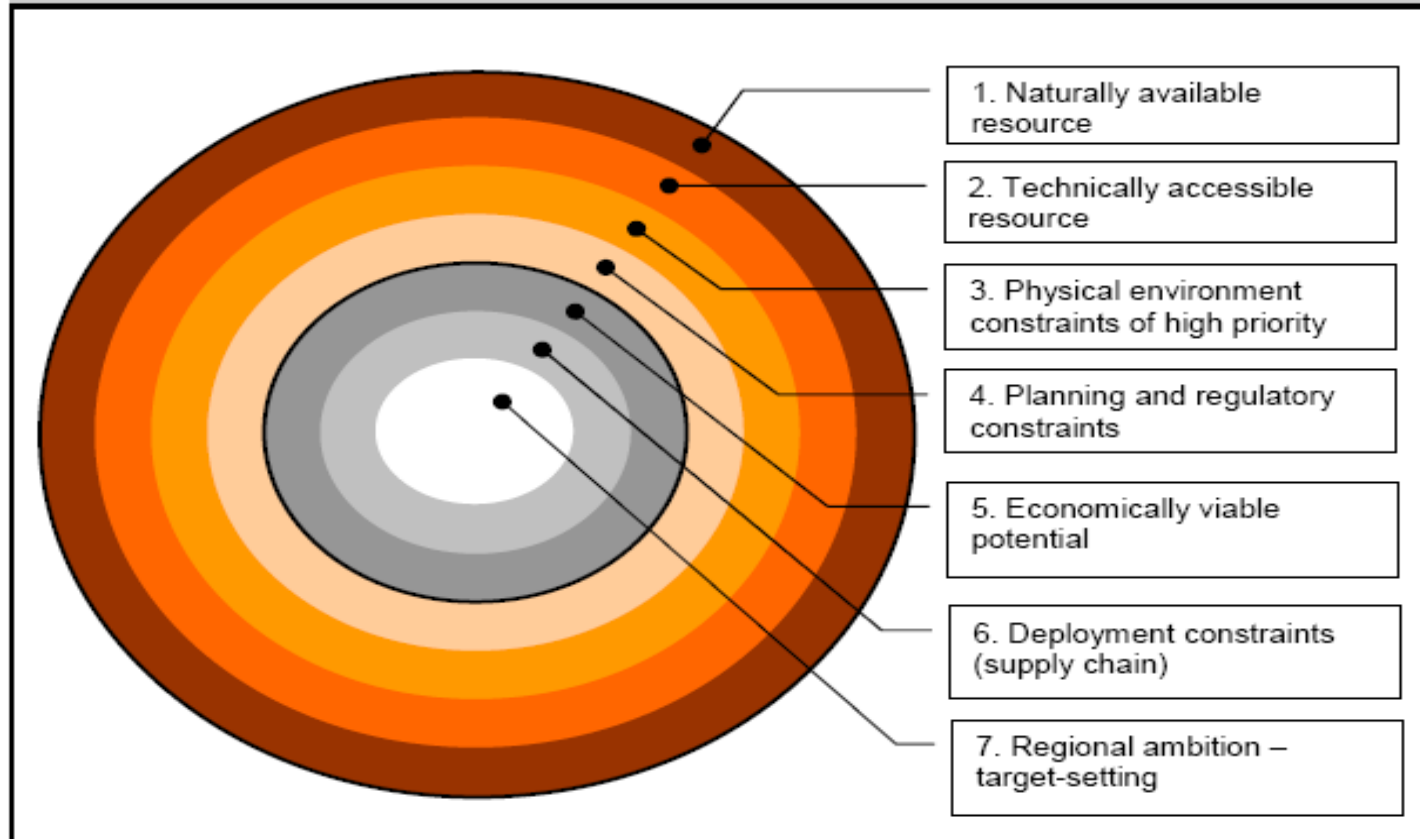
- 2009 Renewable energy strategy - **minimum** targets set 30% electricity, 12% heat, 10% transport
- All types of renewable energy with onshore examined in detail
- Consistent methodology (DECC) to allow comparison between regions
- Understanding capacity and constraints





# Renewable Energy Capacity and Constraints Study - Methodology

Figure 2-1 Stages for developing a comprehensive evidence base for renewable energy potential





# North East England renewable and low-carbon energy assessment

The North East England study will:

- Assess current energy supply and existing and future energy demands in North East England
- Detailed assessment of the potential for installed capacity by renewable and low carbon energy sources
- Establish a robust framework of incremental capacities for renewable energy generation in North East England to 2020 and 2050



# North East England renewable and low-carbon energy assessment

- Recommend a range within which renewable and low carbon energy targets could be set, for the North East Strategy and local development frameworks
- **Not set targets** for renewable energy but will inform policy making
- Hoped to commission consultants this month with study delivered July 2010



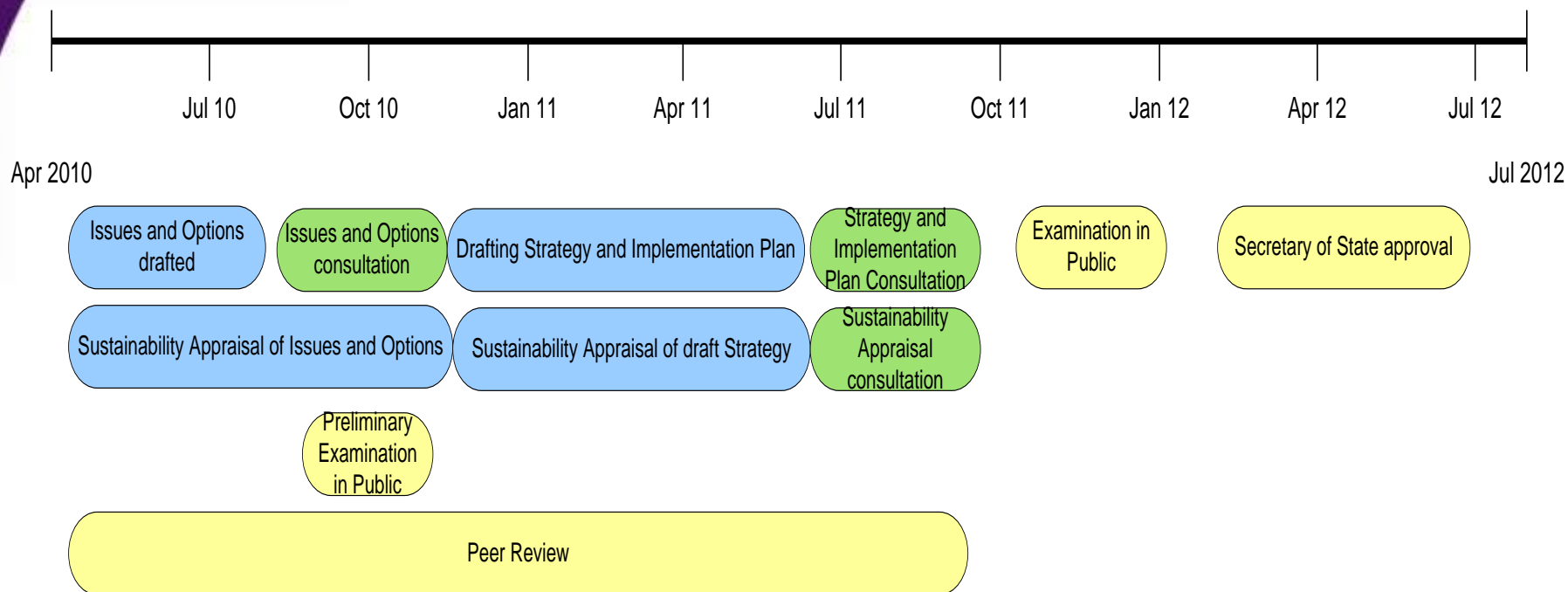
# Background to an integrated North East Strategy


- The Government's Review of Sub National economic development and regeneration was published in July 2007 and began to set out major changes to regional planning.
- The Local Democracy, Economic Development and Construction Bill will be enacted on 1 April 2010



- Local authority leaders' boards and regional development agencies will be the 'responsible regional authorities' and will be jointly responsible for the production of an integrated strategy.
- Until the new integrated strategy is adopted the 'Regional Strategy' will be the existing Regional Spatial Strategy (RSS) and Regional Economic Strategy (RES).
- RSS is a statutory document and includes local development frameworks and major developments should be in general conformity with the RSS unless material considerations indicate otherwise.

# Timetable



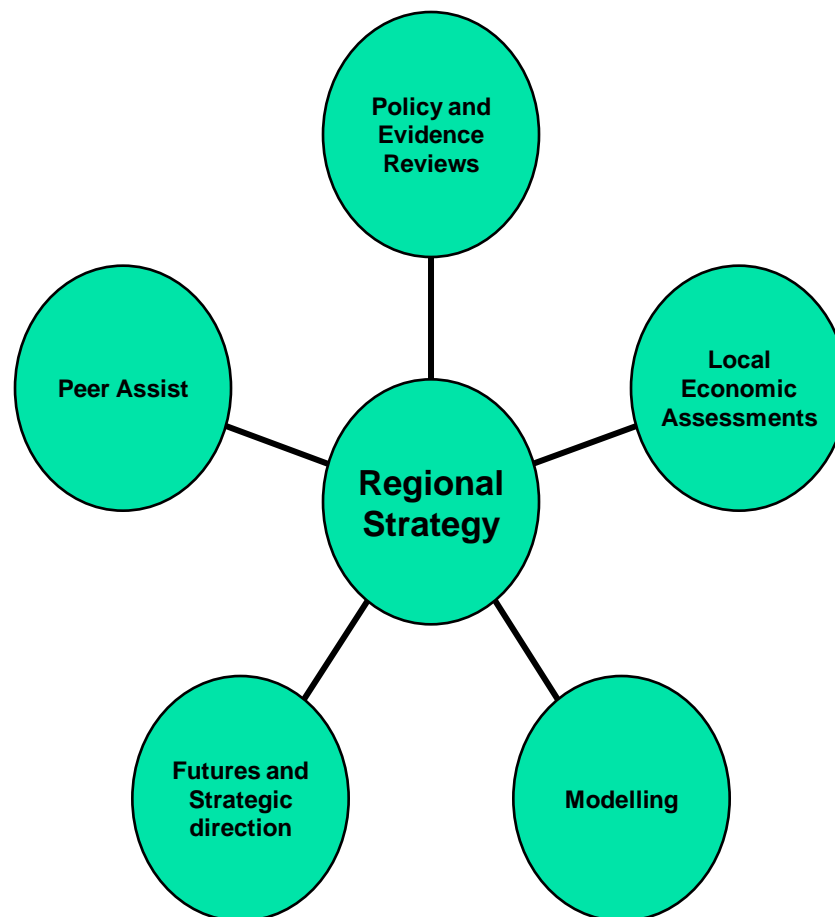
 Drafting and stakeholder discussions

 Formal Consultations

 External processes

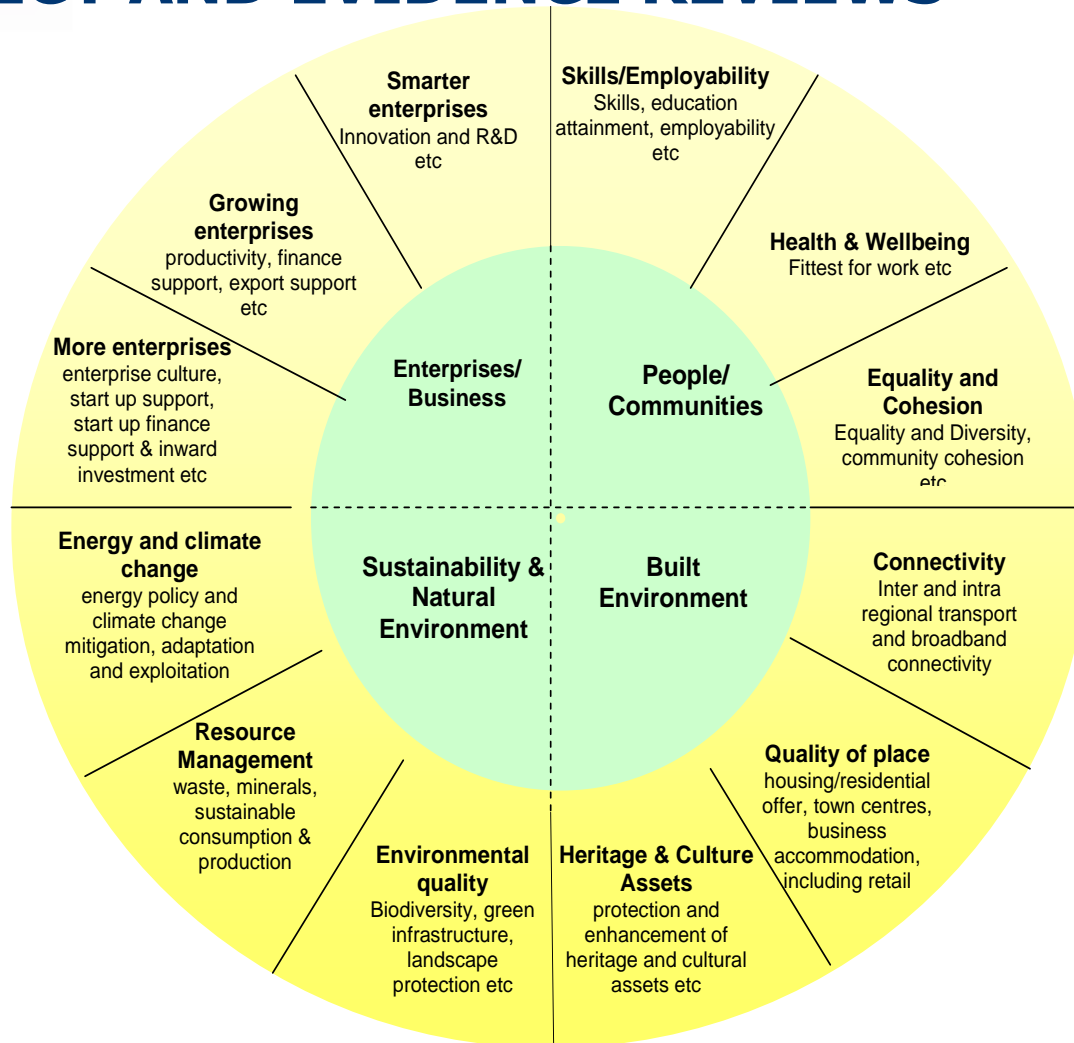


## PROGRESS SO FAR





# POLICY AND EVIDENCE REVIEWS





## Conclusions

- Many years of working on this issue in the North East
- RSS existing statutory framework with minimum targets, areas of least constraint identified and criteria for assessing proposals
- Renewable and low carbon energy assessment will give more detailed analysis of current capacity and constraints for all types of renewables
- Integrated North East strategy will guide the implementation of future targets to encourage sustainable economic growth



# Contacts

[claire.megginson@northeastcouncils.gov.uk](mailto:claire.megginson@northeastcouncils.gov.uk)

[www.strategyintegrationne.co.uk](http://www.strategyintegrationne.co.uk)

[www.northeaststrategy.co.uk](http://www.northeaststrategy.co.uk)