



MINISTRY OF DEFENCE



DEFENCE ESTATES
Delivering Estate Solutions to Defence Needs

Making Space for Wind Energy

9 March 2010

Why is the MOD interested in Wind Energy?

David Boyd, MRTPI

Principal Safeguarding Officer, Defence Estates

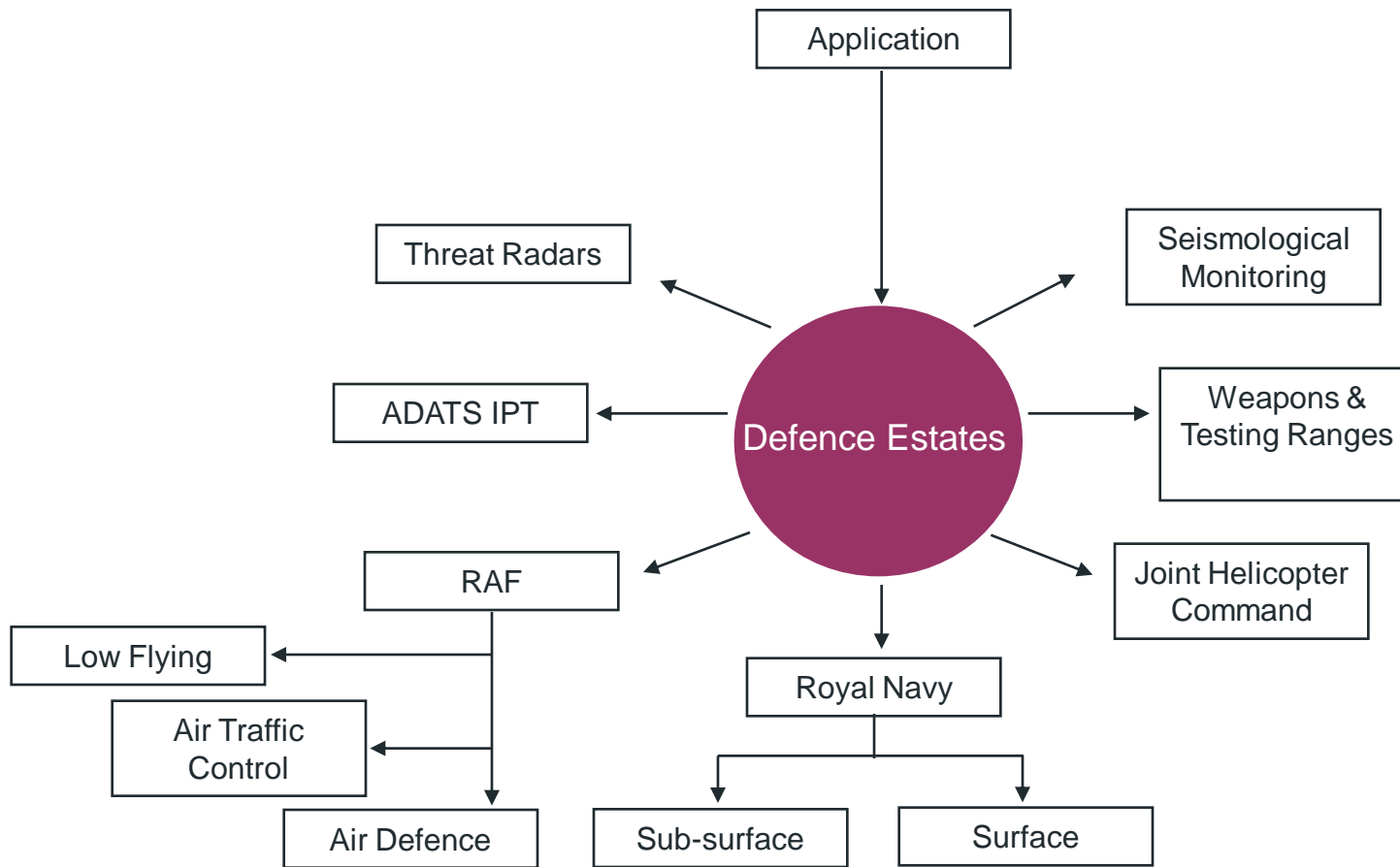
Who are Defence Estates - Safeguarding?



**Defence Estates HQ
Sutton Coldfield
Birmingham**

- MOD focal point for all Safeguarding Issues
- Assessment Areas: 1) Statutory 2) Wind Energy 3) Off Shore
- National team covering the whole UK

Planning Process



Statutory Safeguarding

- Eskdalemuir (Technical)
- RAF Spadeadam
- Other Technical
- MET Office
- Explosives

Eskdalemuir Seismic Array

- **One of 170 seismic stations across the world**
- **1996 Comprehensive Nuclear Test Ban Treaty**
- **MOD manages a ‘noise budget’**
- **Way forward**

STATUTORY SAFEGUARDING SITES
NORTH EAST



KEY

-  Birdstrike
-  Ranges



RAF Spadeadam

- Only facility of its kind in Europe – key NATO facility
- Provides variety of threats and targets in contemporary warfare
- Navy, Army, RAF & NATO
- Soldiers and Air Crew depend on the facility for front line training.
- Way forward



STATUTORY SAFEGUARDING SITES
NORTH EAST



KEY



STATUTORY SAFEGUARDING SITES
NORTH EAST



- KEY
- Explosives (Outer Arc)
 - Explosives (Inner Arc)

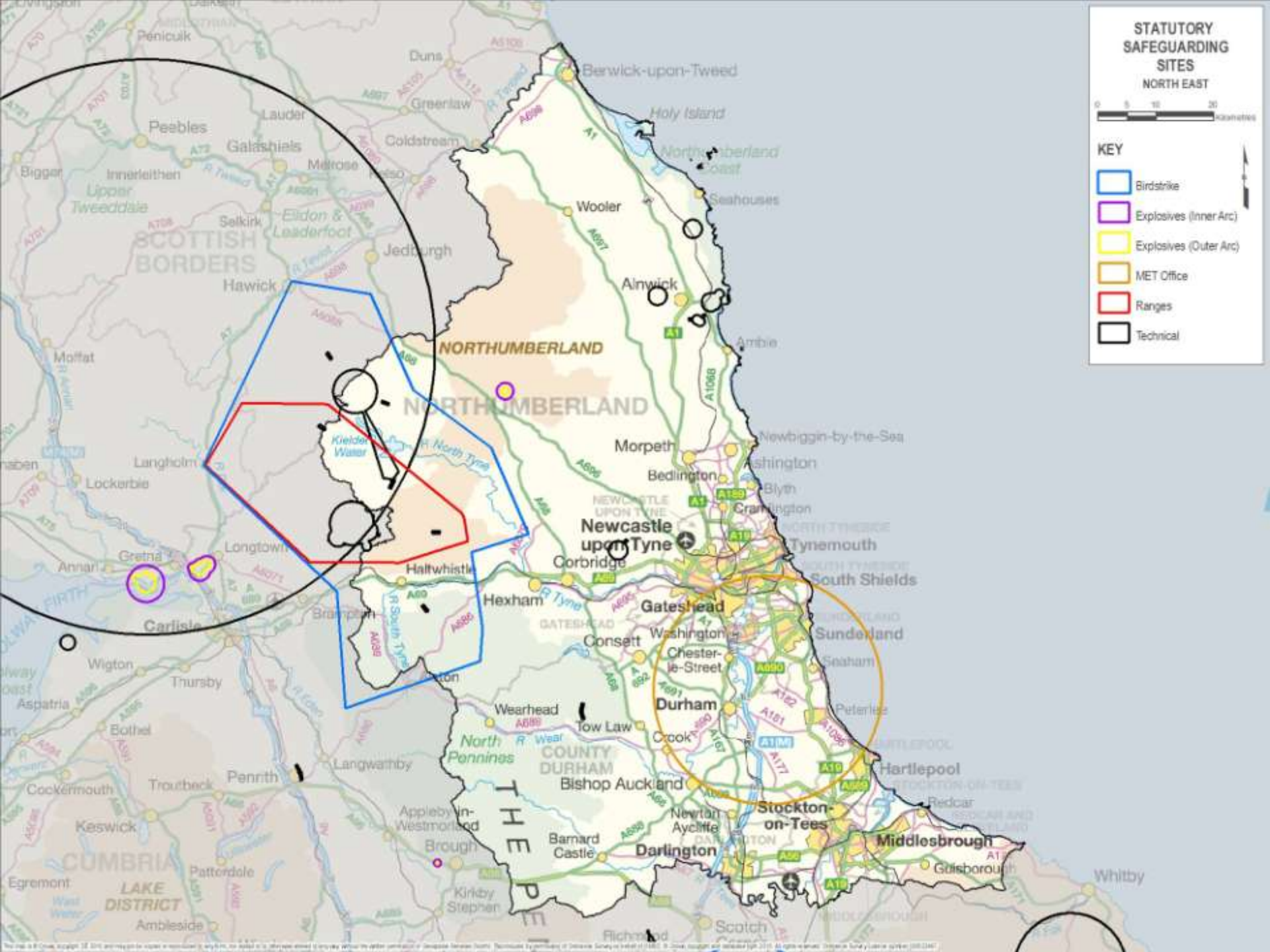


STATUTORY SAFEGUARDING SITES
NORTH EAST



KEY

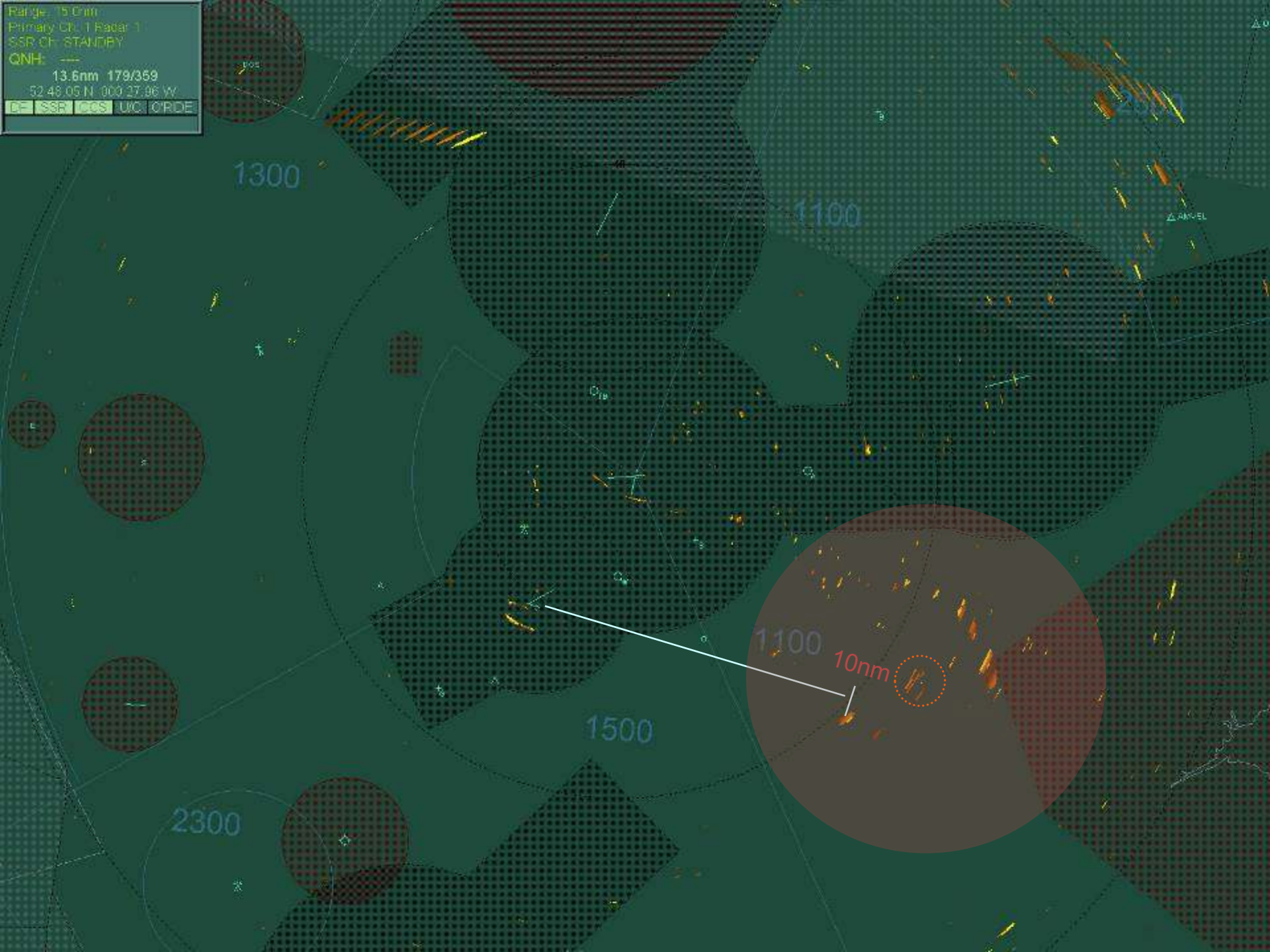
- Birdstrike
- Explosives (Inner Arc)
- Explosives (Outer Arc)
- MET Office
- Ranges
- Technical



Wind Energy

- **Non-statutory consultee**
- **Pre-planning consultation**
- **Air Traffic Control and Air Defence Radar**
- **Way forward**

Range: 15.0nm
Primary CR: 1 Radar: 1
SSR CH: STANDBY
QNH: ---
13.6nm 179/369
52.48.05 N 000.27.96 W
D- SSR- CCGS UIC: C'RDE



Conclusions

- **Safeguard MOD operations and assets**
- **Working closely with:**
 - **other government departments**
 - **developers and industry**
- **At the forefront of technology**

